

## *What is being done to protect the aquifer?*

Albany County has a Casper Aquifer Protection Plan (CAPP), which was developed to protect groundwater resources that supply the City of Laramie Public Water System (PWS), as well as rural residents. The County, in partnership with the City of Laramie and the Wyoming Department of Transportation completed a study and are beginning to implement recommendations from this study to protect the aquifer from contamination in the I-80 Telephone Canyon area.

## *What can I do?*

1. Properly maintain your wastewater system
2. Dispose of chemicals properly.
3. Take used motor oil to a recycling center.
4. Limit the amount of fertilizer used on plants.
5. Get involved in water education.

## *Where can I find more information on the Casper Aquifer?*

Information on the Casper Aquifer can be found at the Albany County Planning website. There you can find maps of the aquifer and regulations.



Albany County Planning Office  
1002 SOUTH THIRD STREET  
LARAMIE WY 82070  
(307) 721-2568  
planning@co.albany.wy.us

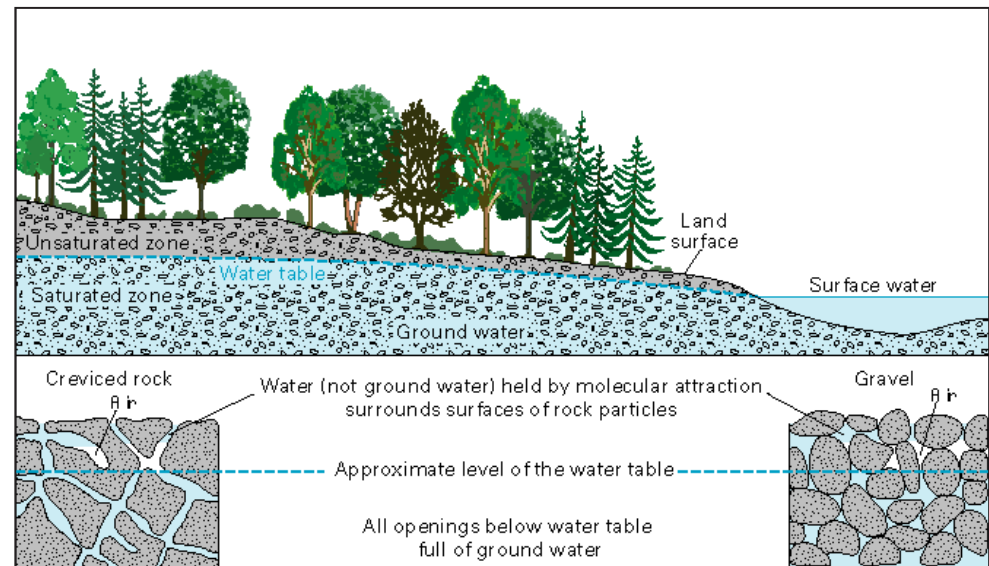
[www.co.albany.wy.us/planning](http://www.co.albany.wy.us/planning)

# Casper Aquifer

## Part 1: General Information

## *What is an aquifer?*

An aquifer is an underground geological formation able to store water. It has a layer of porous rock, sand or dirt that stores the water. Water is replenished through faults, fissures and other features that collect and convey precipitation back into the aquifer. The Casper Aquifer provides groundwater for the City of Laramie and Albany County residents.



USGS

## Why is the Casper Aquifer Important?

The Aquifer supplies approximately 50-60% of the City's water supply depending on the time of year and 100% of the water to approximately 450 rural residences in Albany County.



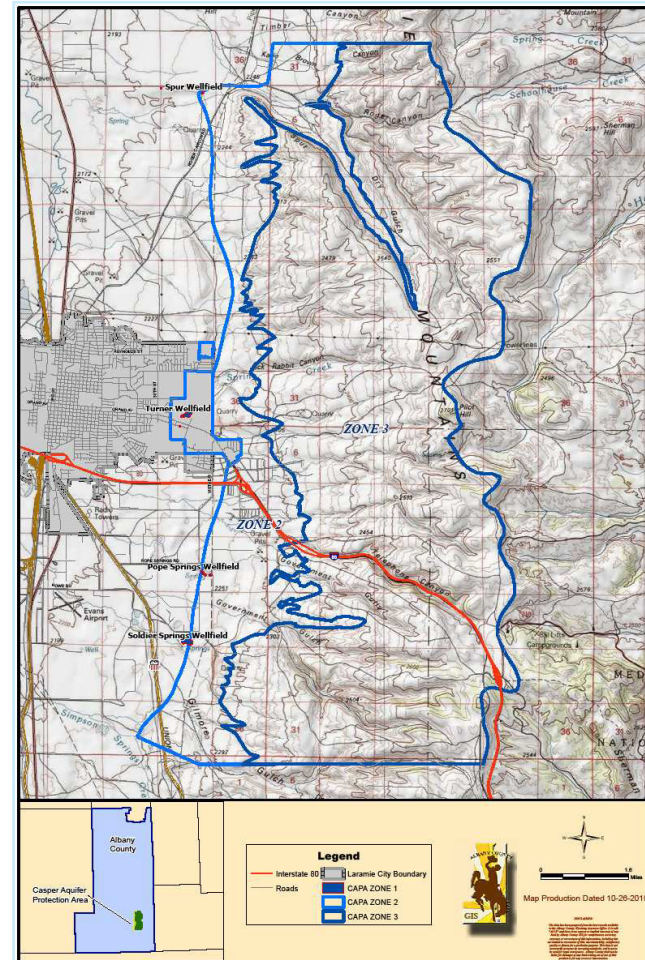
City of Laramie

## What Makes the Aquifer Vulnerable to Contamination?

Contaminants can get into the aquifer through vulnerable features, such as fissures, fractures, shallow depths to groundwater and drainages.

### Potential Sources of Contamination

- Wastewater Systems
- Lawn chemicals and fertilizers
- Commercial activity
- Household chemicals and petroleum products
- I-80 Telephone Canyon hazardous waste spill
- Abandoned or damaged wells



## Where is the Casper Aquifer Vulnerable to Contamination?

The Casper Aquifer is vulnerable in the recharge area, which encompasses approximately 79 square miles that lie east of Laramie and extends to the crest of the Laramie Range, with the northern boundary approximately 6 miles north and the southern boundary 6 miles south of the city limits. This area is known as the Casper Aquifer Protection Overlay Zone (APOZ).